

Tech Chat

GEORGETOWN HIGH
SCHOOL

DECEMBER, 2008

Dear Tech Geeks,

Sometimes my Home Folder or SASI doesn't show up on my desktop...how can I fix this?

Answer:

- Go to the "My Network Places" icon>Right Click>Novell Login and relog into Novell.
- Go to the Application Explorer icon (bottom right of your desktop)>Right Click>Refresh.

Please submit your questions by Jan.9th

to: rodriguezcy@georgetownisd.org



Look Who's Using Technology

Pam Schultz

German Teacher



Pam has been a teacher for 33 years. The use of technology in her classroom has helped make teaching German a more rewarding experi-

ence. Pam has been filming her students speaking German so that they can become more fluent by interacting with their peers. She is also looking to start a blog with her classroom so that they can practice their writing skills by discussing topics in German.



Website Resources



www.worldofteaching.com (Teacher-made Powerpoints)
www.teachertube.com (Teacher-made videos)
www.teachersdomain.org (Digital Media for Classroom)

Professional Development for the Month

What: PHOTOSTORY (#5772)

When: MONDAY, DEC. 8th 4-5:30

Where: TIFF LAB

Please Bring 10-15 pictures on a flash drive or have them saved in your home folder.



Did you Know?

- We have Interwrite Pads available for checkout. These are interactive tablets you can use to teach from anywhere in the room.
- We also have more speakers available for yearly checkout.

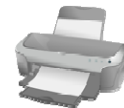
Contact Kristin (7290) or Cynthia (7314) to checkout these items.

TROUBLESHOOTING TIPS

Having printer issues? Before you throw it at a student try these steps.

1. Check to see if all cables are properly connected.

- printer to outlet
- printer to computer



2. Check print queue by double clicking on the printer icon in the task bar, bottom right, and empty it if there are pending documents to be printed. This is done by right clicking on each pending document and hitting cancel. It should disappear.

3. If all else fails, unplug from outlet, wait a minute, plug it back in and restart your computer.