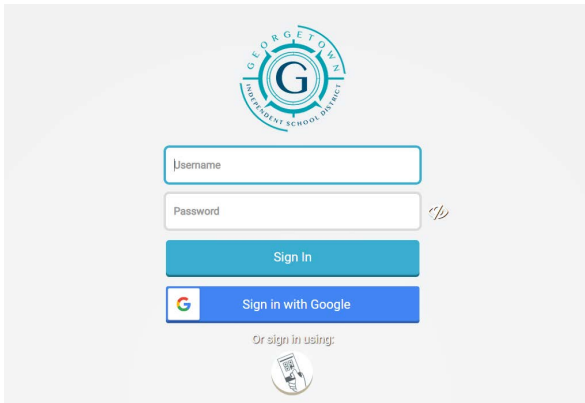


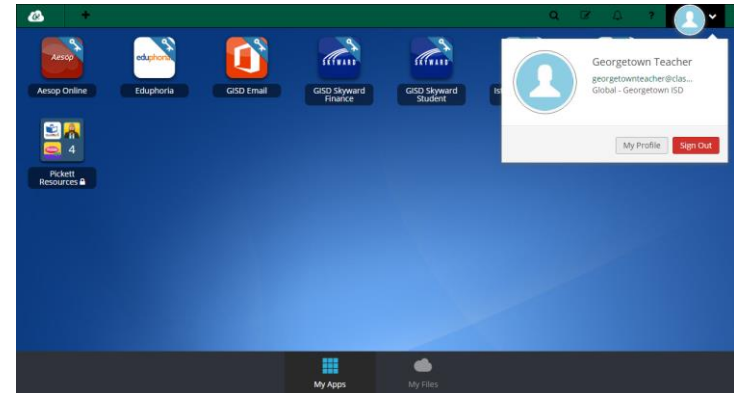
## 1. Sign In

Sign in by clicking on the ClassLink icon in the top right corner of the screen. Click **Sign In**. It is suggested you **do not** let Chrome remember this password.



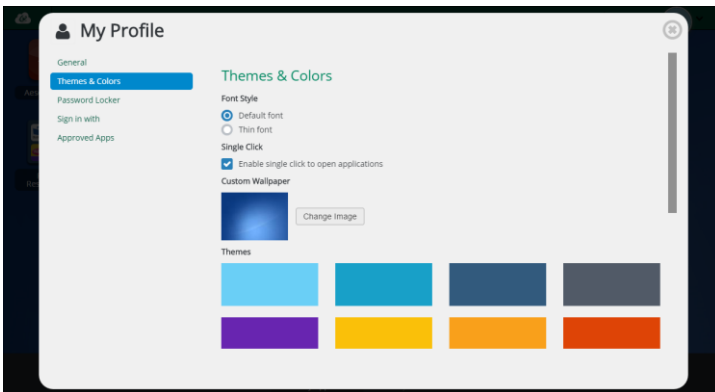
## 2. Profile Settings

Here is where you change your profile picture, themes & colors access your password locker, and sign in options.



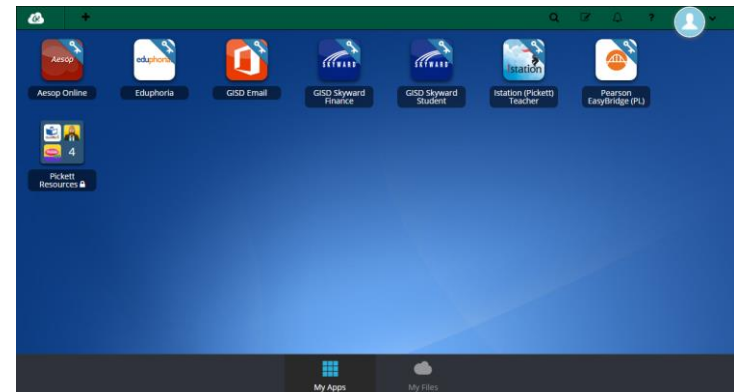
## 3. General Settings

**Profile Settings > General** allows you to choose an avatar for your profile. You can edit your wallpaper and theme in **Themes & Colors**.



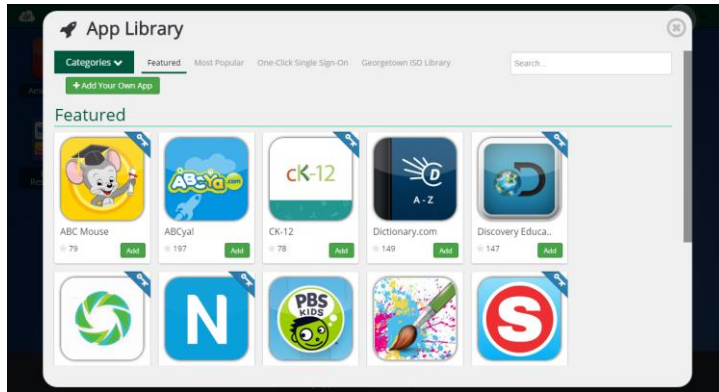
## 4. My Apps

The My Apps screen is where all of your online resources will be located. District provided resources will be automatically pushed to your ClassLink screen and in most cases login will be automatic.



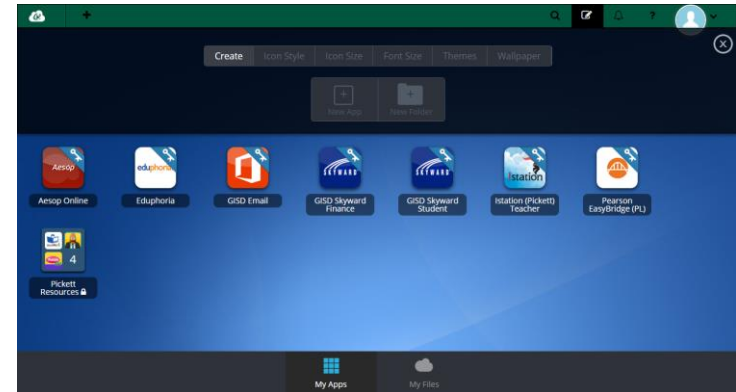
## 5. App Library

The library contains many educational resources to choose from. Click the Plus (+) on the top left of the My Apps screen. Click Add on any app to place it on your My Apps screen.



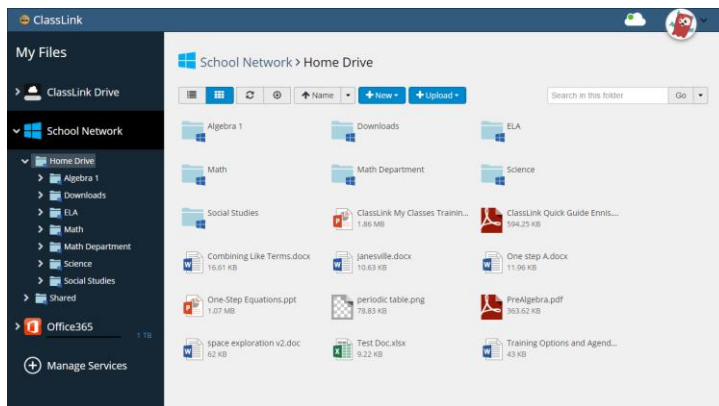
## 6. Edit Mode

To go into Edit Mode, click the paper and pencil symbol on the top right of your screen. While in Edit Mode, you can create folders and customize your My Apps screen.



## 7. My Files

**My Files > School Network** allows you to access your school network drives from any device, any where, any time.



## 8. Cloud Drives

**My Files > Manage Services > Connect** allows you to connect other Cloud services in ClassLink to access all of your files in one location!

